



Media House,, Ware Road, Hertford SG13 7AB

Guide price £587,500



2



2

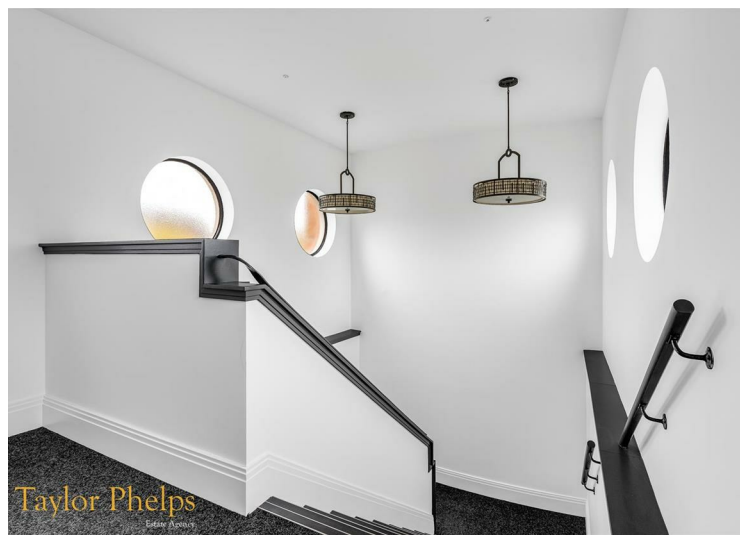
Taylor Phelps

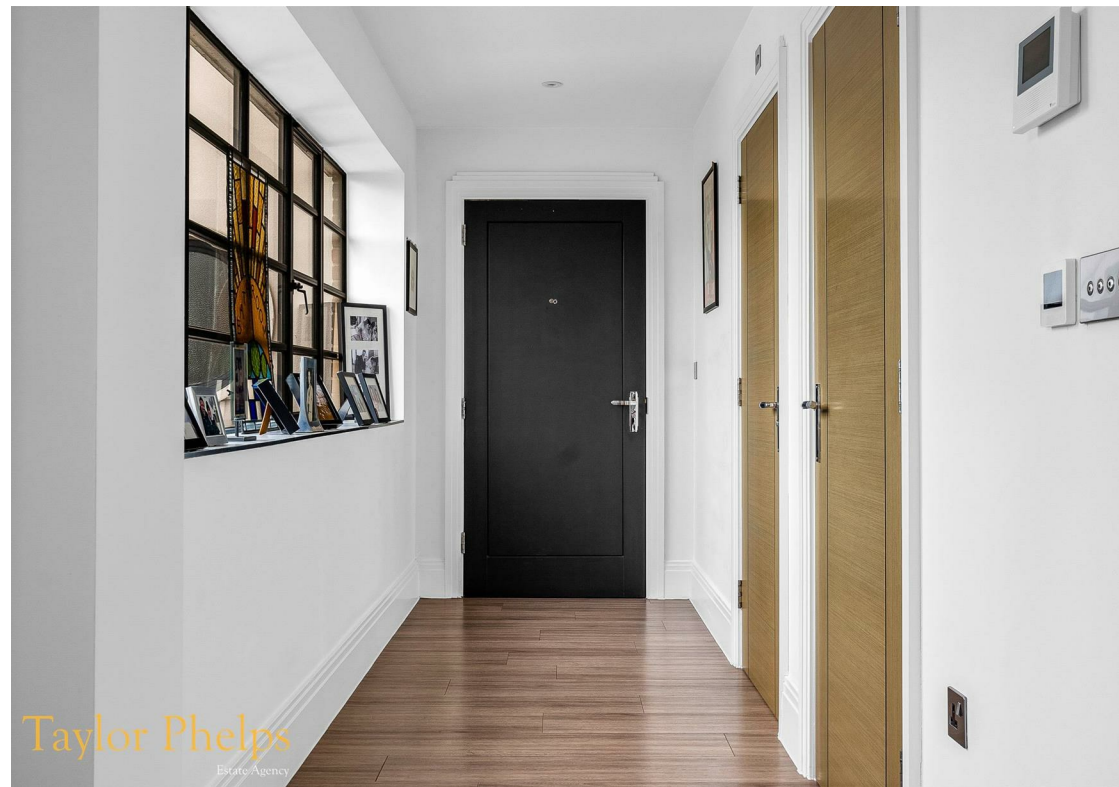
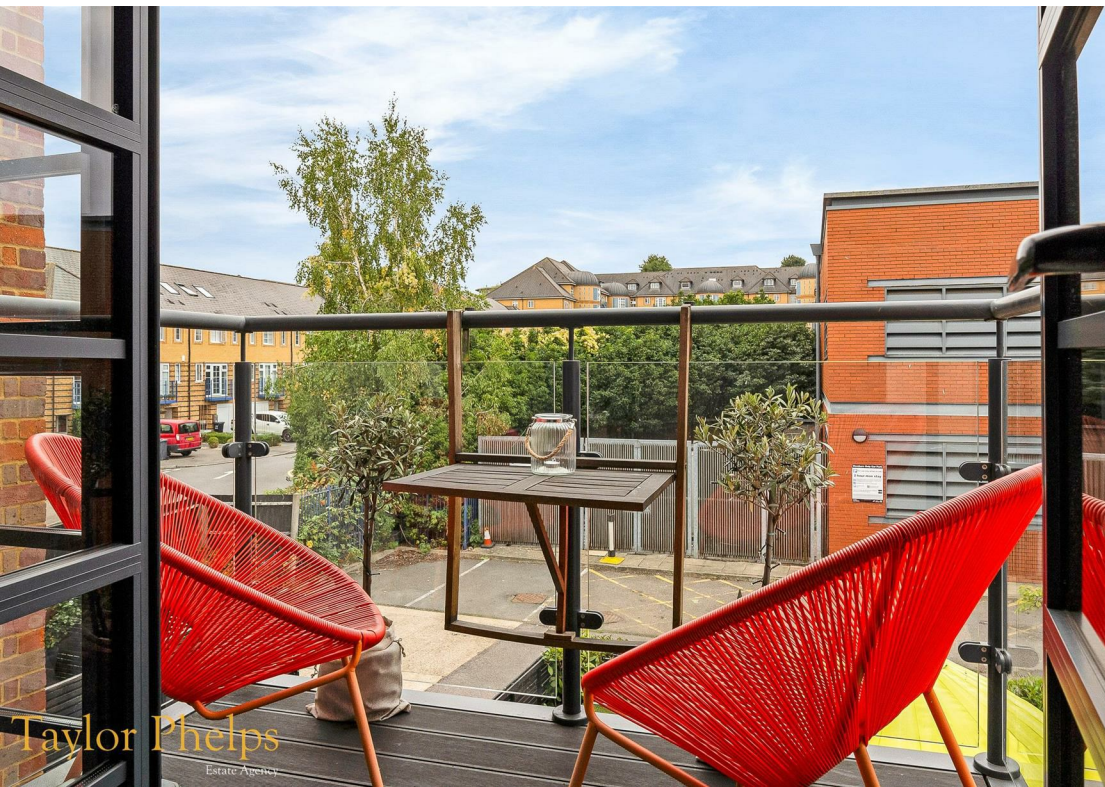
Estate Agency

Taylor Phelps

Estate Agency

Taylor Phelps are pleased to offer this magnificent apartment forming part of this exclusive 1930's art deco conversion in Hertford. This stunning apartment boast two bedrooms with two luxurious bathrooms and an additional w/c. The living accommodation is bright and spacious and features a modern open plan high spec kitchen and private south facing balcony. Externally the property benefits from both resident parking and visitor parking, whilst the conveniences of Hertford town centre are just moment away, with Hertford East and Hertford North train stations serving central London.











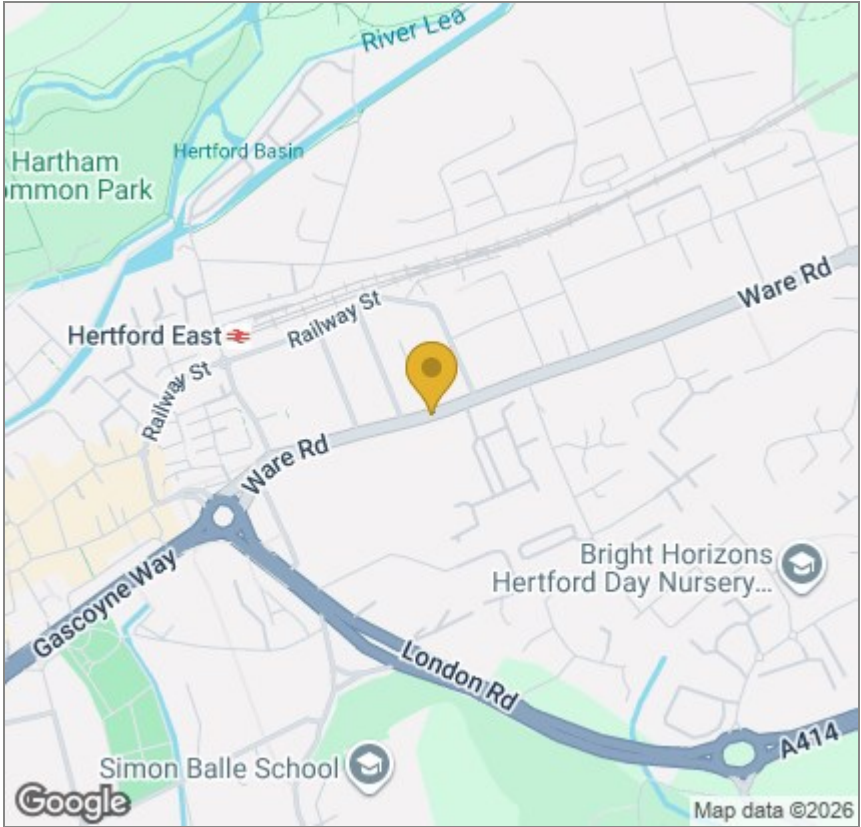
NEWLAND
GARDENS



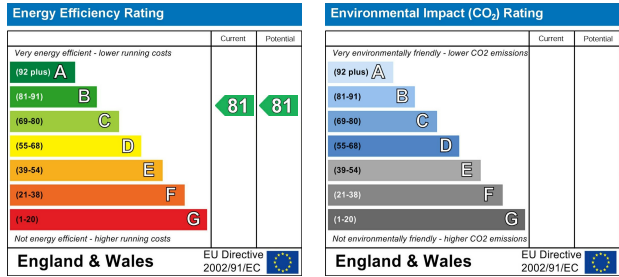
Floor Plan



Area Map



Energy Efficiency Graph



These particulars, whilst believed to be accurate are set out as a general outline only for guidance and do not constitute any part of an offer or contract. Intending purchasers should not rely on them as statements of representation of fact, but must satisfy themselves by inspection or otherwise as to their accuracy. No person in this firms employment has the authority to make or give any representation or warranty in respect of the property.